



VoIP Gateways

October 2016

Agenda

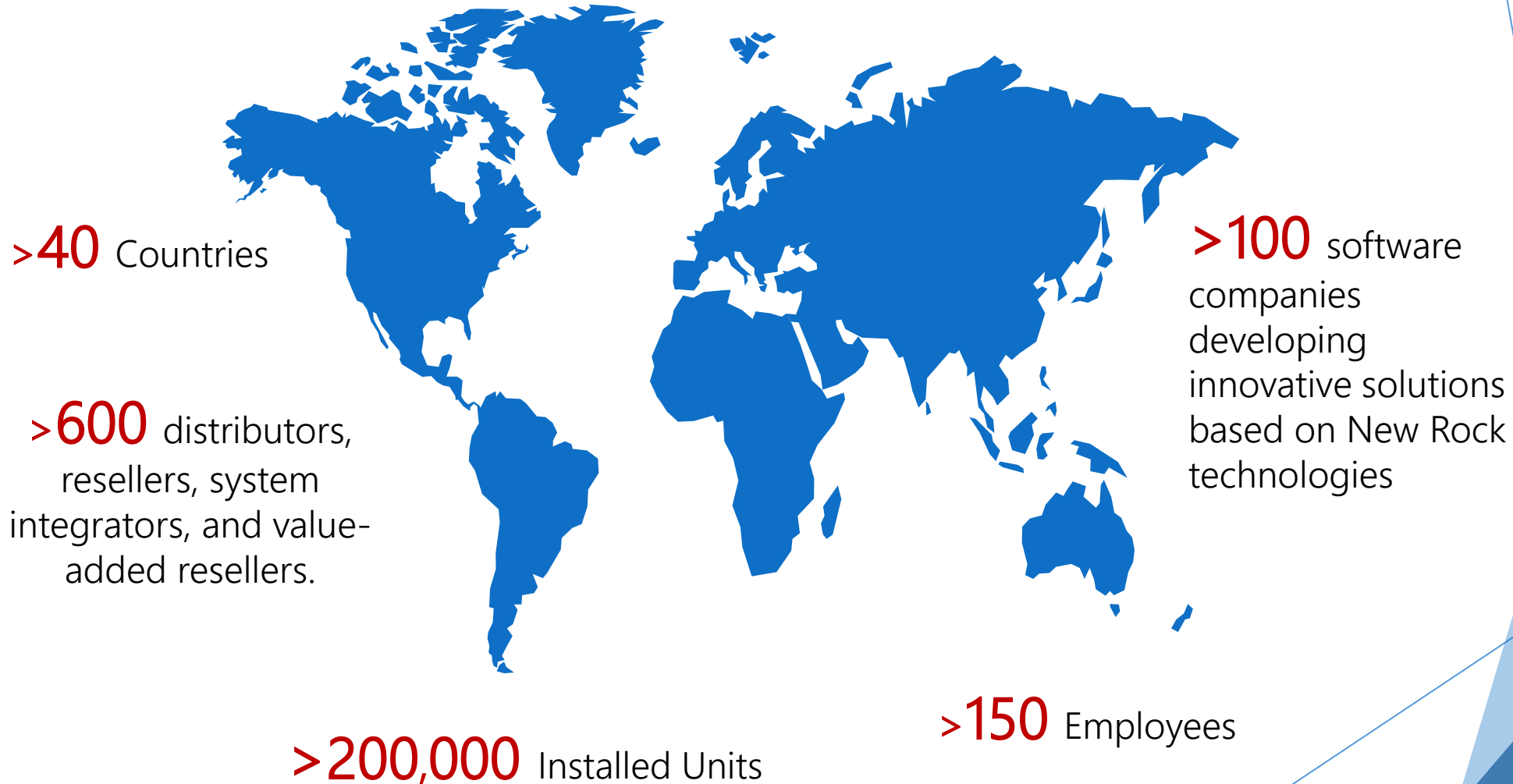
- ◆ About New Rock Technologies
- ◆ Why VoIP Gateways?
- ◆ Product Highlights
- ◆ Business Applications and Use Cases
- ◆ Portfolio of Gateways
 - ◆ MX Gateways
 - ◆ Other Gateways
- ◆ Pricing & SKUs
- ◆ The Competition
- ◆ Closing

About New Rock Technologies




- ◆ Founded in 2004, New Rock Technologies, Inc., a Delaware corporation, is a China-based innovation company, headquartered in Shanghai.
- ◆ Business: design, produce, and market an extensive feature-rich, telecom product line for the SME, including an all-in-one IP-PBX, hybrid IP-PBX, media gateways, session border controllers, and related application software.
- ◆ Offer solutions for service providers and the telecom channel: system integrators, resellers, independent software vendors, as well as OEM partners.
- ◆ New Rock, which is now self-funded, was originally funded by IDG Technology Venture Investment.

New Rock Global Operations



World-Class Products

Application Software	 Soft-console	 Soft Phone	 Contact Center	 Call Accounting System	 App. API	
NRP Series IP Phones	 NRP1000/P	 NRP1004/P	 NRP1012/P	 NRP1200/P	 NRP1100	
SX Series SBC	 SX1000	 SX3000				
ISG Series xPON	 ISG3004	 ISG3008				
WROC Wireless All-in-one	 WROC2000	 WROC3000				
MX Series VoIP Gateway	 HX4 MX8	 MX60	 MX120	 MX100E		
OM Series IPPBX	 OM4	 OM12	 OM20	 OM80	 OM200	 OM500

Why VoIP Gateways?

Why VoIP Gateways?

- ◆ Traditional networks and IP networks must co-exist and interoperate
- ◆ Evolutionary approach to VOIP – Reduced costs
- ◆ Investment protection of existing infrastructure
- ◆ Standardize interconnection points throughout the network to reduce administration and maintenance costs
- ◆ Configuration flexibility to meet customer's requirements, particularly multi-tenant installations and fail-over scenarios
- ◆ Enhanced security and reliability
- ◆ Reduced cost of migration
- ◆ Maximize ROI for the service provider and the end user

Product Highlights

The background features abstract, overlapping geometric shapes in various shades of blue, ranging from light sky blue to deep navy blue. The shapes are primarily triangles and polygons, creating a dynamic and modern aesthetic. The text 'Product Highlights' is centered in a clean, blue, sans-serif font.

Product Positioning

- ◆ The most-reliable, easiest-to-deploy VoIP gateway in its class
 - ◆ SIP Trunking
 - ◆ Fail-over
 - ◆ Multi-tenant support
- ◆ Connecting legacy TDM networks and equipment to a VoIP network.
- ◆ Fax over IP that just works with Smart FoIP!

Product Highlights

- ◆ Easy to operate and maintain
- ◆ Configuration flexibility
- ◆ Intelligent and rich in features
 - ◆ FXO Feature: Dial tone or voice prompt for 2nd-stage dialing, busy-tone detection, caller-ID detection, polarity-reversal detection
 - ◆ G.711/T.38 fax, POS terminal, and modem support
 - ◆ Busy-tone detection and polarity reversal of FXO ports
 - ◆ 3GPP IMS support
 - ◆ 110~220VAC or -48V DC power input
- ◆ Extensive routing capabilities
 - ◆ 500 routing-rule capacity

Product Highlights

- ◆ Security/ failover
 - ◆ PSTN failover on power failure or network interruption
 - ◆ IP filter and encryption for security
- ◆ Browser-based GUI for quick-and-easy provisioning
 - ◆ Option 66, TR069/TR104/TR106 for remote configuration and management
 - ◆ Radius call record
- ◆ Interoperability with major telecom players
 - ◆ Compatible with unified communication solutions, such as CallManager, OCS/Lync/Skype for Business, and Asterisk

Interoperability Partners



Skype
for Business



ERICSSON



World-Class Customers



Easy Configuration with Browser-Based GUI Interface

Basic	ISDN	Advance	Status	Logs	Tools	Info
ISDN 1 ISDN 2 ISDN 3 ISDN 4 Logout						
Name		TEST1				
Enable		<input checked="" type="checkbox"/>				
Application						
Collecting CDPN		<input type="radio"/> Overlap		<input checked="" type="radio"/> Enbloc		
D channel		<input checked="" type="radio"/> Timeslot 16		<input type="radio"/> Timeslot 24		
Switch type		<input checked="" type="radio"/> User		<input type="radio"/> Network		
Signaling Standard		CCITT				
<small>In general, NI-2 should be applied when T1 is used, and CCITT should be applied when E1 is used</small>						
Circuit hunting		Forward				
D channel service message		<input type="checkbox"/>				
Nail-up connection		<input checked="" type="checkbox"/>				
CPN category		<input type="radio"/> Standard		<input checked="" type="radio"/> Nonstandard		
CPN presentation		<input type="checkbox"/>				
CDPN category		<input type="radio"/> Standard		<input checked="" type="radio"/> Nonstandard		
Busy line handling		<input type="radio"/> Announcement		<input checked="" type="radio"/> Hang up		
CID exclusive		<input checked="" type="checkbox"/> <small>The exclusive bit in the CID field will be set</small>				
Second stage dialing						
Enable		<input type="checkbox"/>				
Prompt		<input type="radio"/> Announcement		<input checked="" type="radio"/> Dial tone		
Calling party number (CPN)		<input type="radio"/> Originating number		<input checked="" type="radio"/> Original CDPN		
Called party number (CDPN)		<input type="radio"/> Original CDPN + Second dialed number		<input checked="" type="radio"/> Second dialed number		
Maintenance						
ISDN Layer 1						
Status		Link down				
BERT		Duration		seconds		<input type="button" value="Start"/>
Near End Loop Back		<input type="button" value="Start"/>				
ISDN-D channel						
Status		In Service				
ISDN-B channel						
● 0 1 2 3 4 5 6 7 8 9 10 11 12 13 14 15 16 17 18 19 20 21 22 23 24 25 26 27 28 29 30 31						
<input type="button" value="Query"/>		<input type="button" value="Block"/>		<input type="button" value="Unblock"/>		<input type="button" value="Restart"/>
<input type="button" value="Submit"/>						

Easy Configuration

Basic | ISDN | Advance | Status | Logs | Tools | Info

Network | System | SIP | TDM | FoIP | Logout

Host name	MX100G	Contain letter, number and "-" but must start with letter	
MAC address	00:0E:A9:61:78:90		
ETH			
IP address assignment	Fixed		
IP address	10.128.196.196		
Netmask	255.255.0.0		
Gateway IP address	10.128.1.1		
AUX			
IP address			
Netmask			
DNS			
Mode	Off		
SNTP			
Primary server	198.60.22.240		
Secondary server	133.100.9.2		
Time zone	(GMT+08:00) Beijing		

Basic | ISDN | Advance | Status | Logs | Tools | Info

Network | System | SIP | TDM | FoIP | Logout

DS1 type	<input checked="" type="radio"/> E1	<input type="radio"/> T1		
PCM codec	<input checked="" type="radio"/> ALaw	<input type="radio"/> μ Law		
Timing source	TDM 1			
Gain to IP	<input type="text" value="0"/>			
Framing	E1_MF_CRC	E1_MF_CRC	E1_MF_CRC	E1_MF_CRC
Line code	HDB3	HDB3	HDB3	HDB3
Line impedance	120OHM	120OHM	120OHM	120OHM
Digit transformation	Enter the transformation rules that are applicable only to the specified T1/E1 span. See Section 5.3.4 of the User Configuration Guide for details.			
TDM1	<input type="text"/>			
TDM2	<input type="text"/>			
TDM3	<input type="text"/>			
TDM4	<input type="text"/>			

Submit

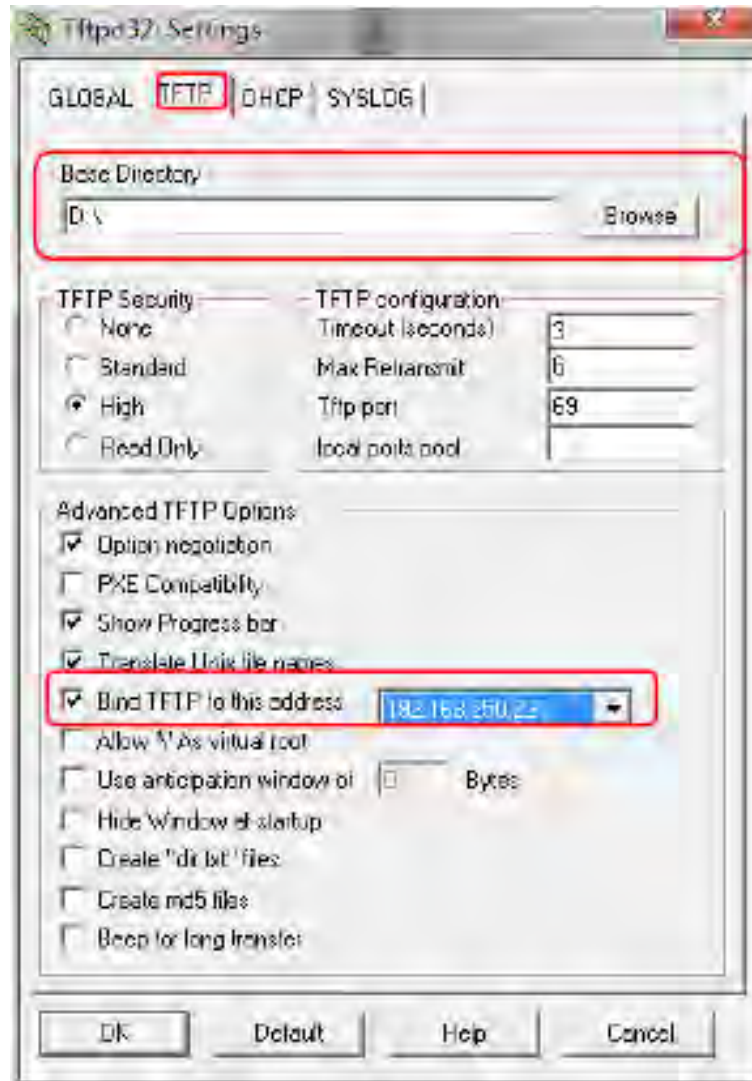
Advanced Management Tools

- ◆ Selection of interfaces
 - ◆ Browser-based Interface: HTTP, HTTPS
 - ◆ Command-line Interface: Serial (RS-232), Telnet, SSH
- ◆ Built-in logging functions
 - ◆ Real-time debug
 - ◆ Syslog
- ◆ SNMP
- ◆ Automated configuration

Service Provider Auto Provisioning

- ◆ Auto provisioning allows firmware upgrades and configuration files to be stored and managed on an auto-configuration server (ACS), and
 - ◆ The devices visit the ACS when powered on or periodically, and
 - ◆ Download the latest firmware package or configuration files
- ◆ Features:
 - ◆ Selectively configuring or upgrading some devices or all devices
 - ◆ Selectively configure some or all parameters
 - ◆ TFTP, FTP, or HTTP, or HTTPS mode
 - ◆ Obtaining ACS URL via DHCP option 66 or redirection mechanism
 - ◆ Drive down support costs for ITSPs or any sizable deployment by supporting highly-efficient, remote-device management and maintenance.
 - ◆ Remove the potential risk of loss of data and data intrusion by providing configuration file backup and data encryption on transmission
 - ◆ Easy to implement

Service Provider Auto Provisioning

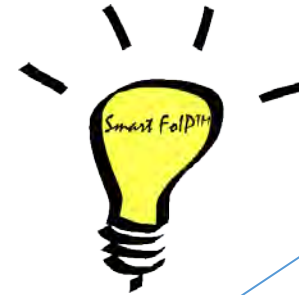


Smart FoIP®: Solving Two Big Problems

Smart FoIP, the patented technology, solves the two main causes of failed Fax over IP (FoIP) transmissions:

- ◆ Late T.38 re-Invites
- ◆ G.711 PCM-clock synchronization

Both Smart ATA and the MX8A offer enhanced, full-function voice and fax capabilities that provide near-PSTN success rates over IP.



Smart FoIP® Benefits

Smart FoIP-enabled products eliminate the need for POTS lines for fax. and complete a comprehensive IP solution, reducing costs and improving productivity for service providers and end-users.

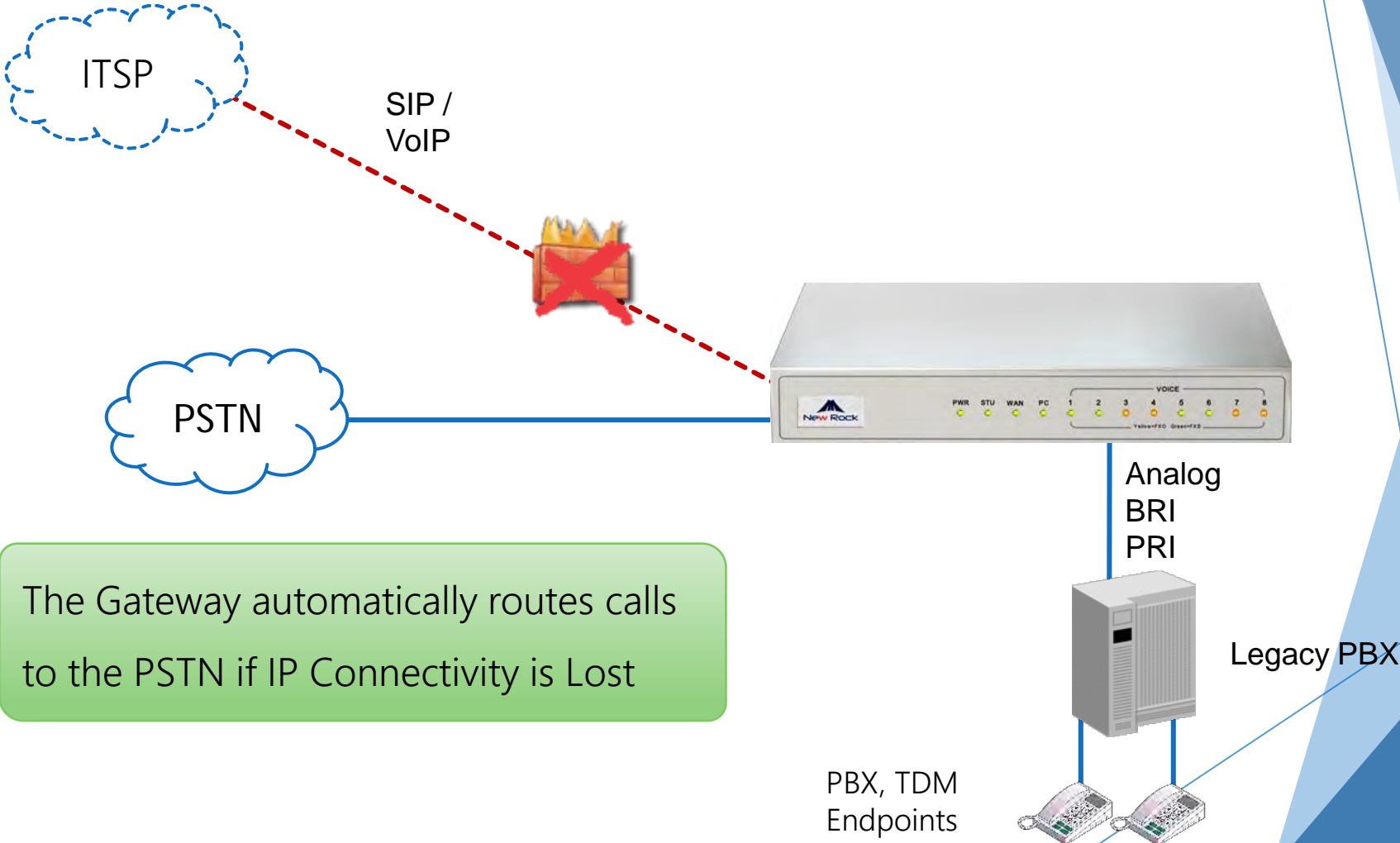
- ◆ Improved subscriber/customer satisfaction (5-10% improvement in FoIP success rates)
- ◆ Reduced support costs
- ◆ Reduced operations costs
- ◆ Patent license (US patent 9,094,419)



Business Applications and Use Cases

The background features a complex, abstract design of overlapping, semi-transparent blue polygons in various shades, ranging from light sky blue to deep navy blue. The shapes are primarily triangular and quadrilateral, creating a dynamic, layered effect that is most prominent on the right side of the slide.

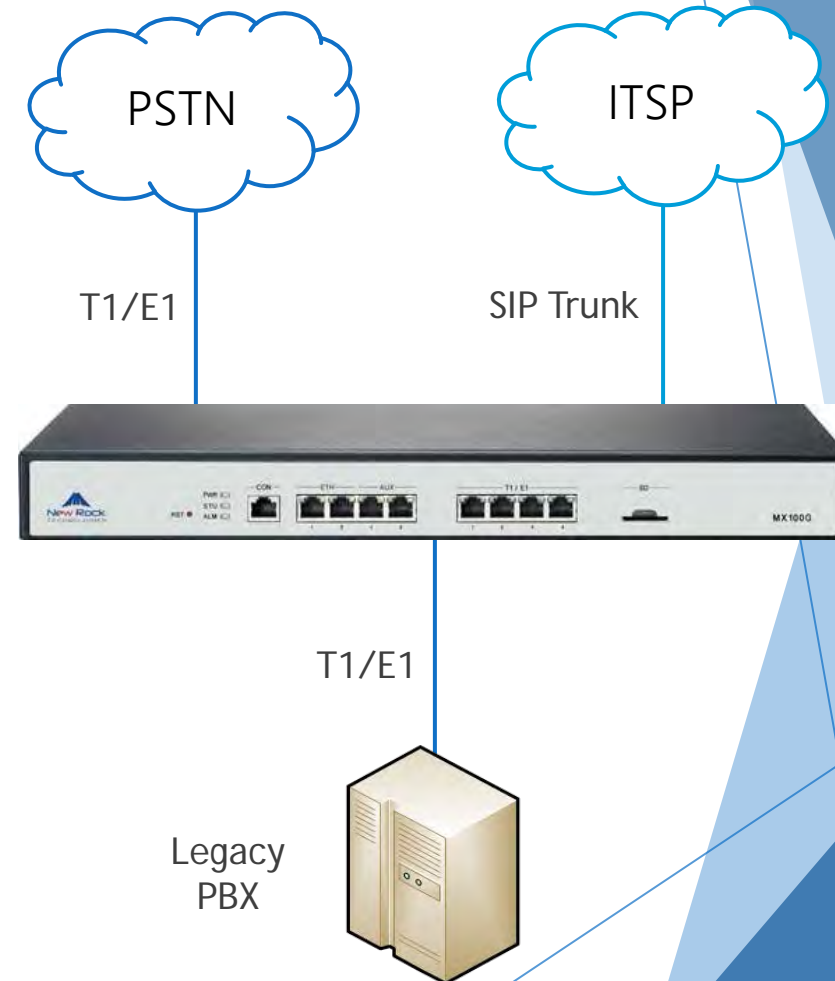
PSTN Failover



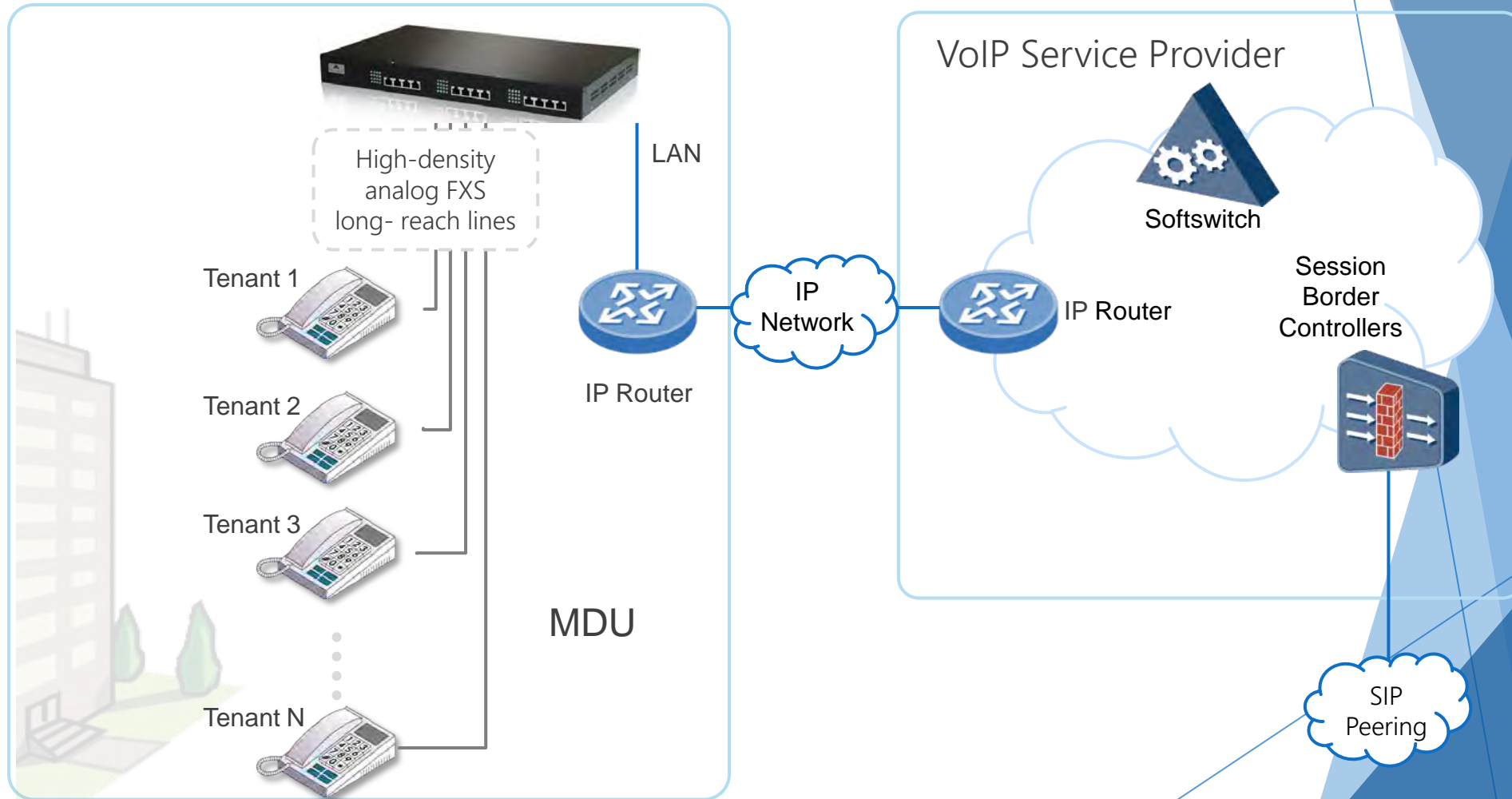
The Gateway automatically routes calls to the PSTN if IP Connectivity is Lost

Bypass or transition to SIP Trunking

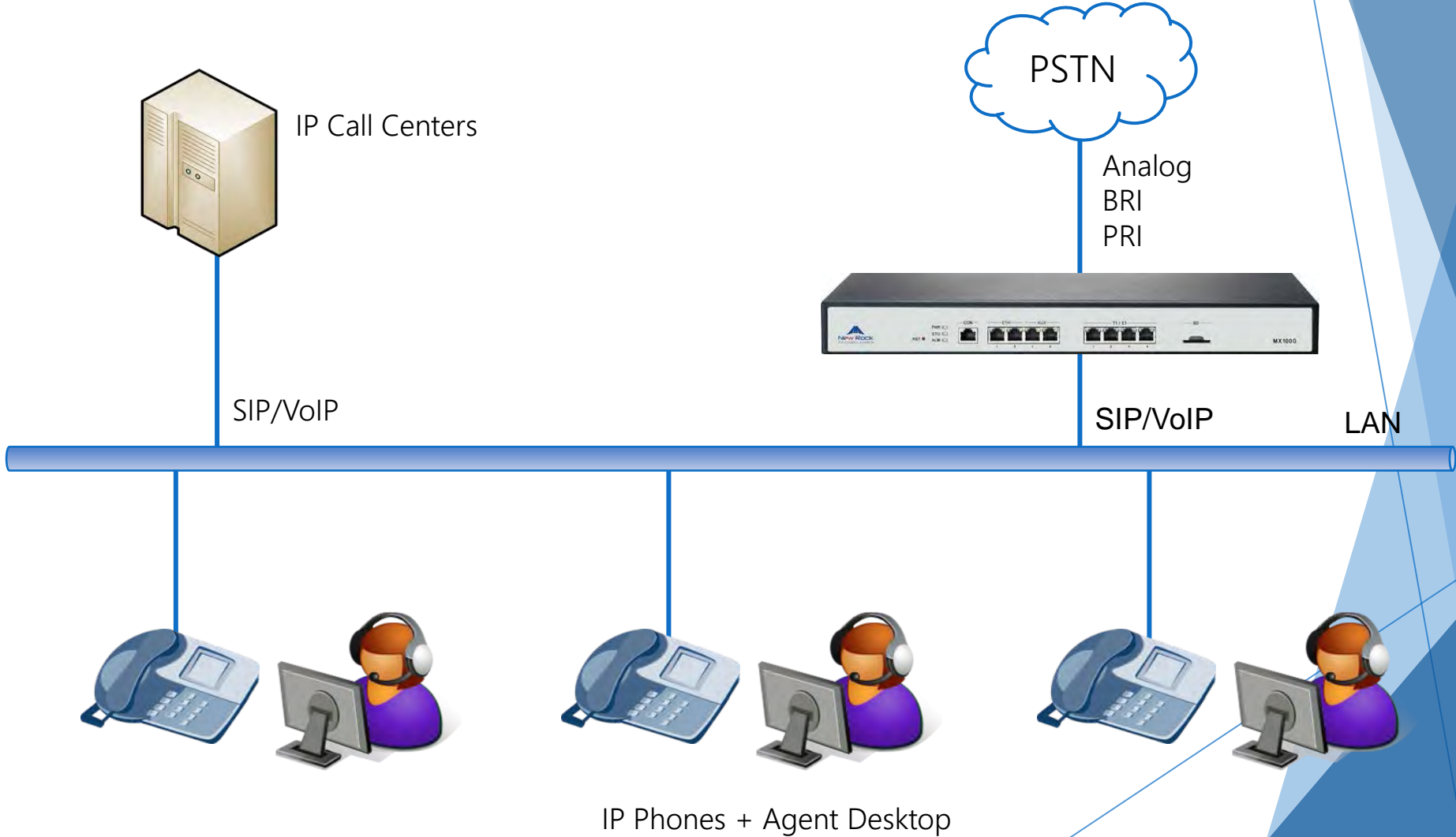
- ◆ Configured for SIP trunking
- ◆ Move calls to SIP over time
- ◆ Completely transparent
- ◆ Resilience in case of:
 - ◆ Power failure to gateway
 - ◆ Link to ITSP Fails



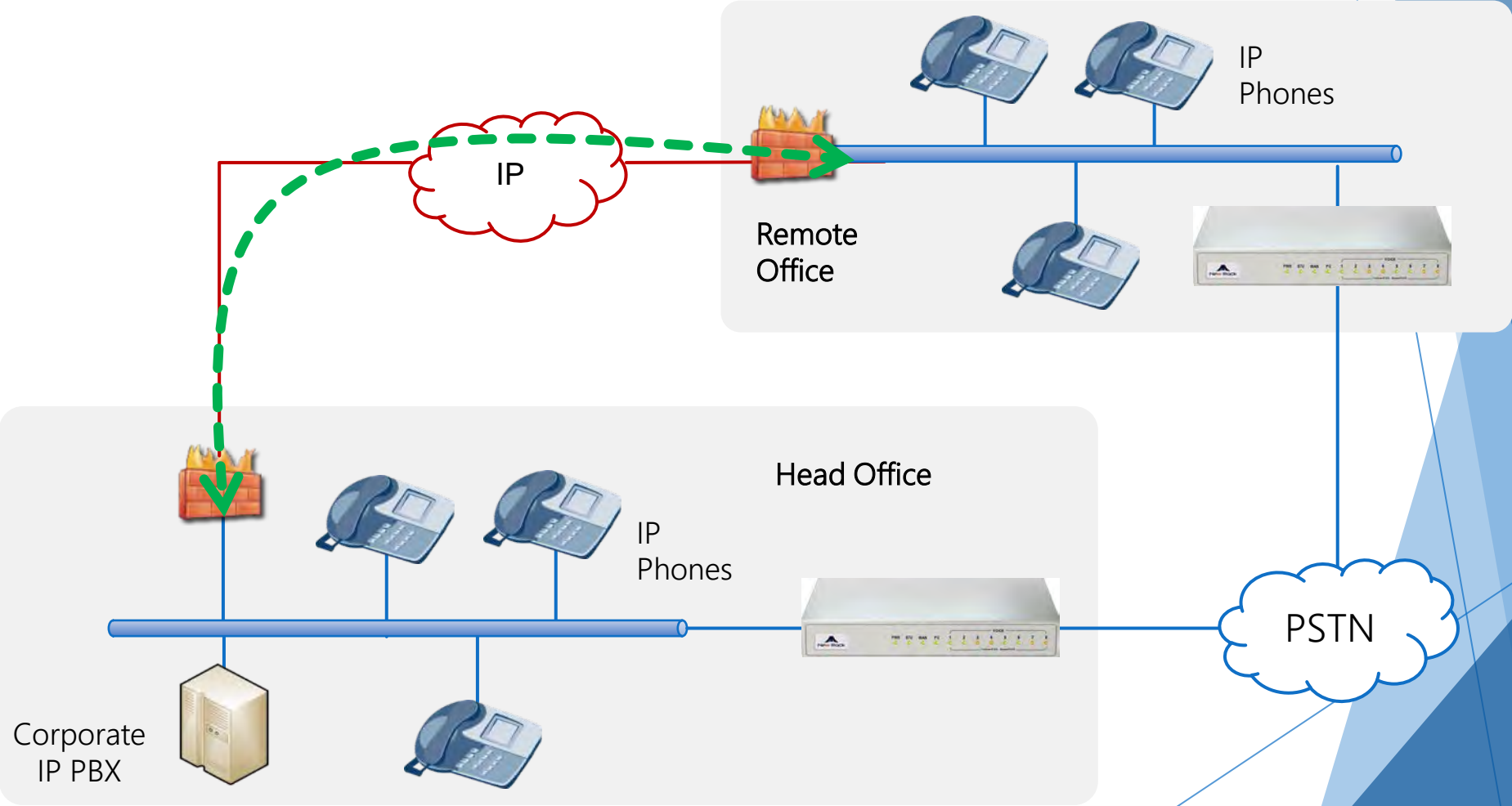
SIP Dial Tone/Multi-Tenant Units



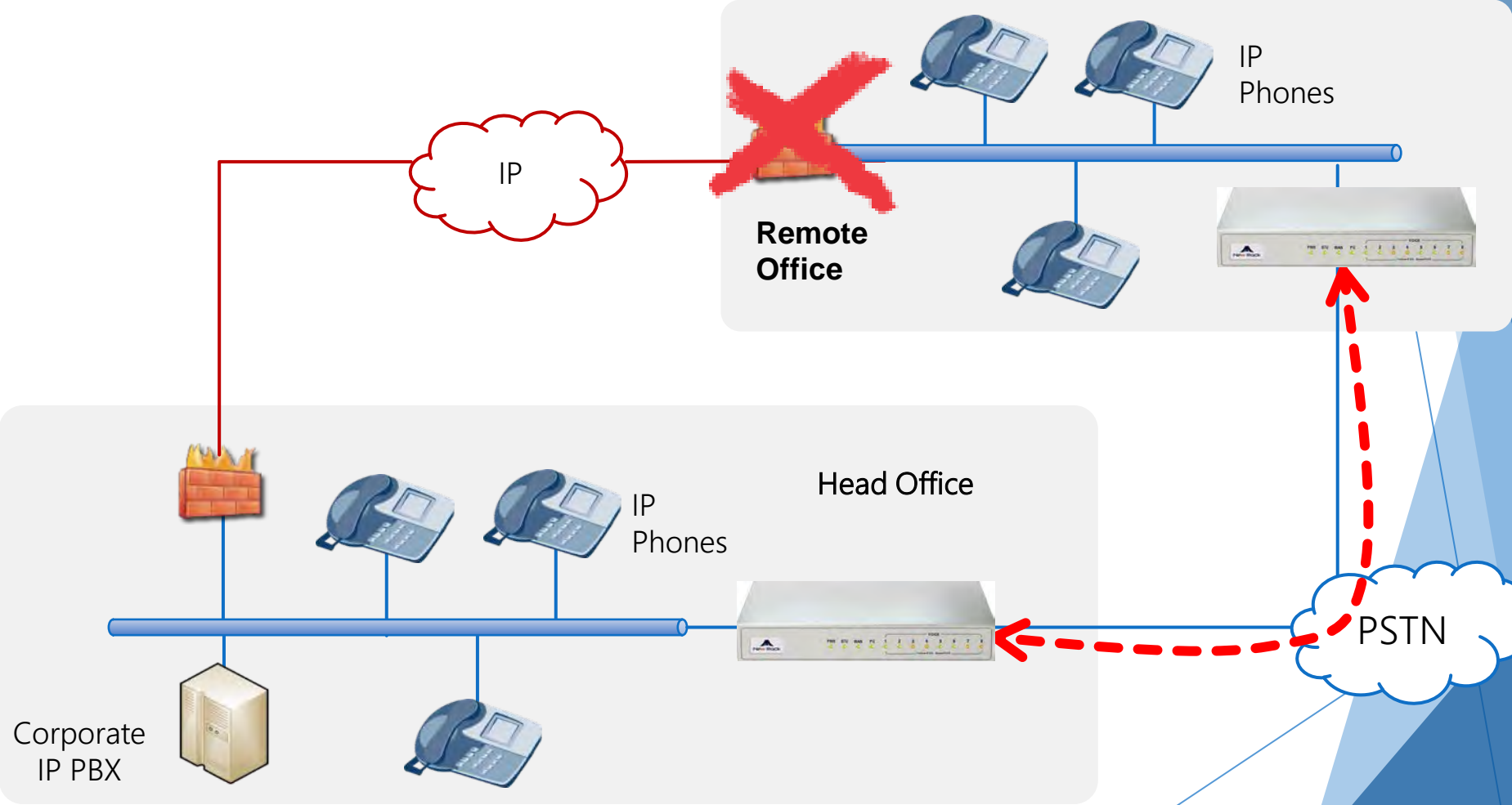
PSTN Access for VoIP Contact Center



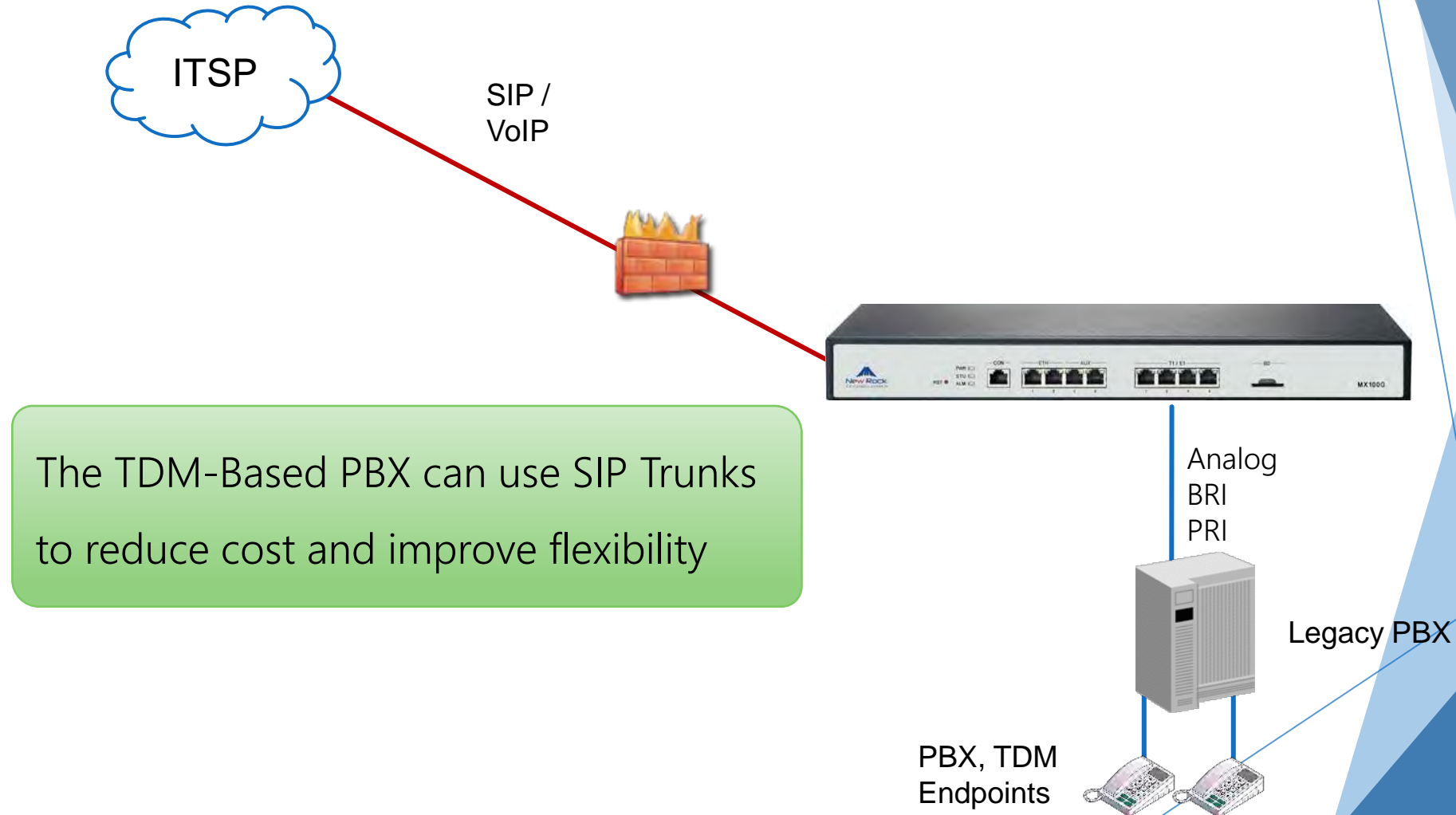
Remote Office Survivability – Normal



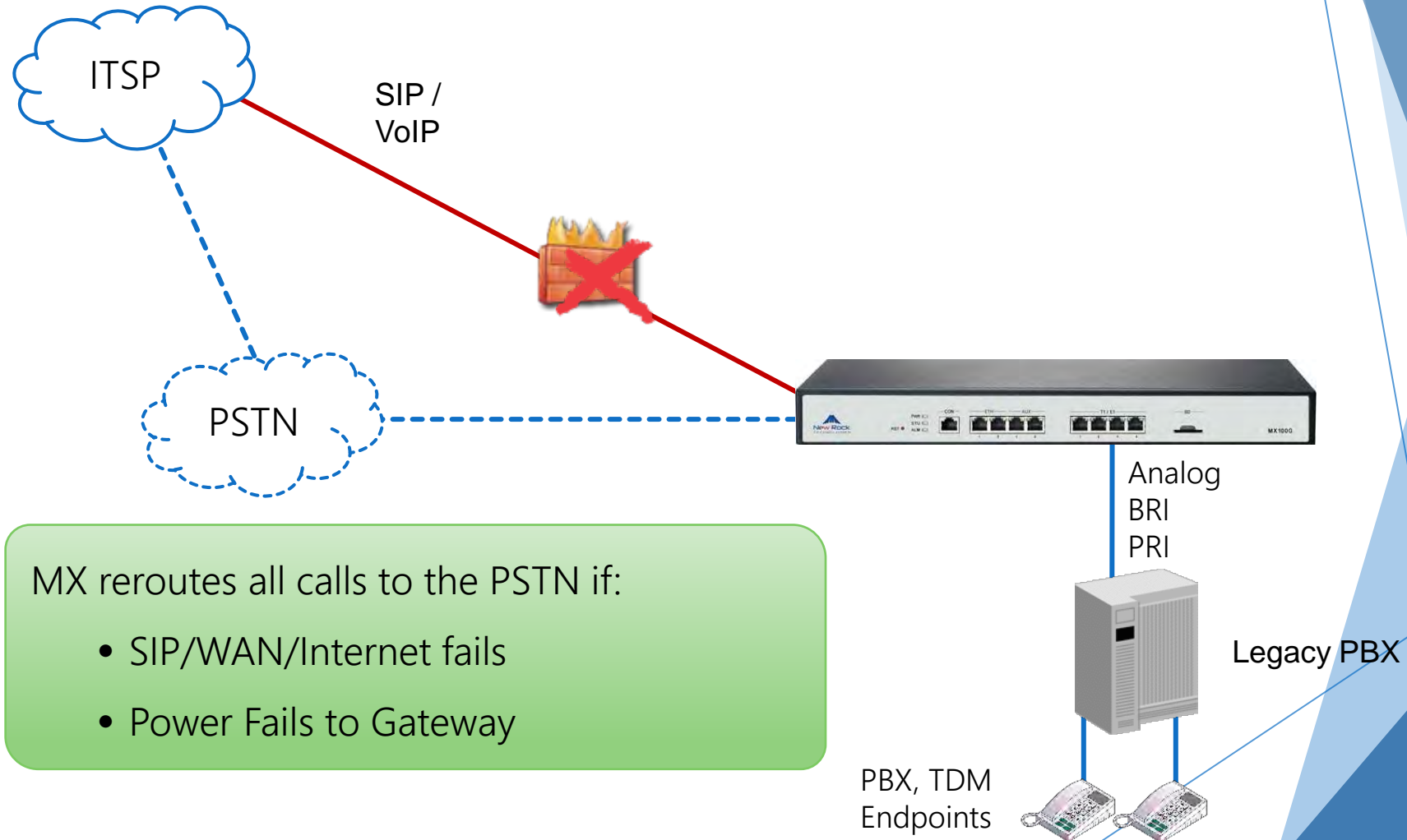
Remote Office Survivability – Failover



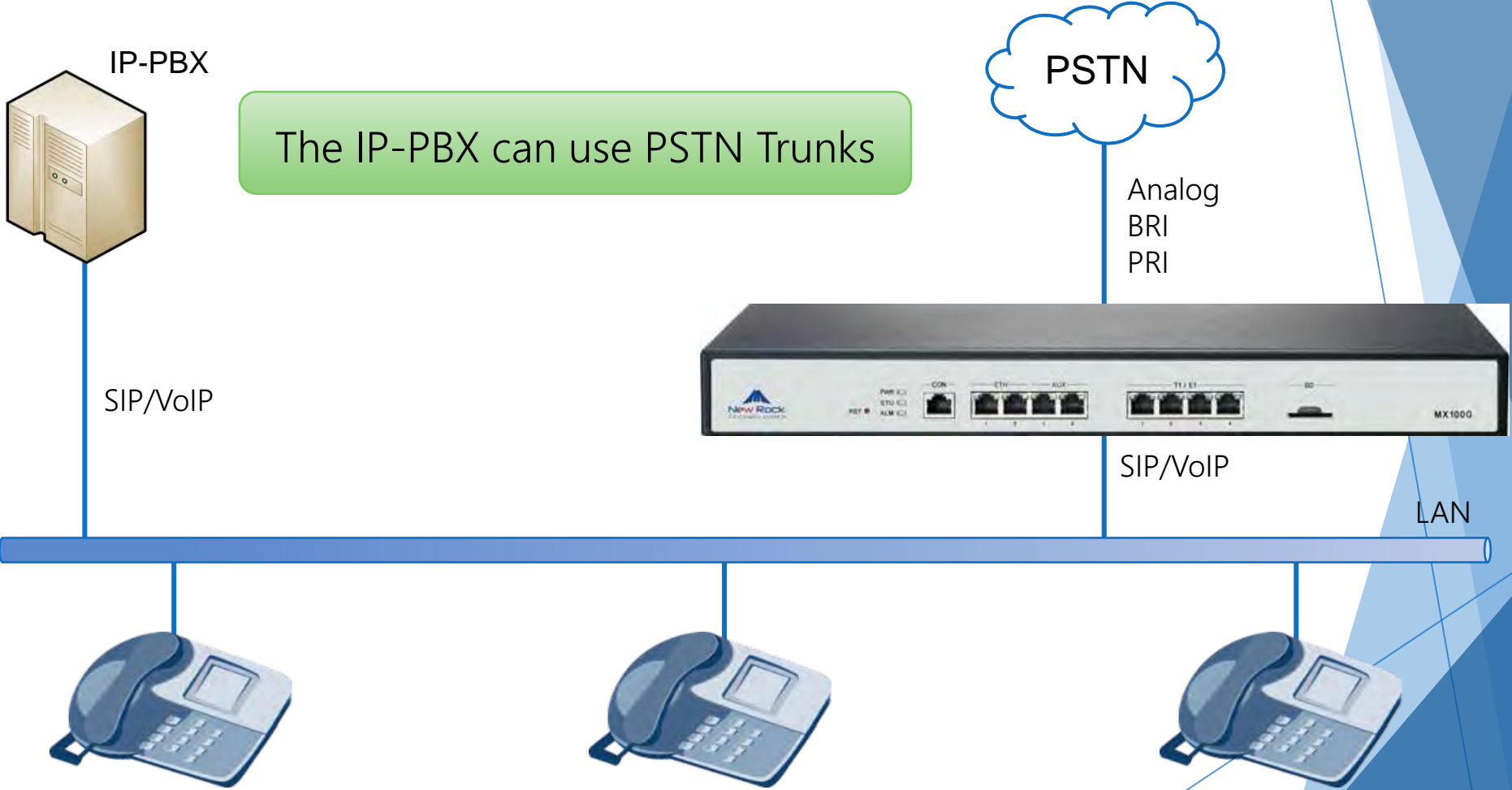
Connect Legacy PBX to SIP Trunking



SIP Trunking with Resilience



Legacy Network Connectivity for IP PBXs



The IP-PBX can use PSTN Trunks



Analog
BRI
PRI

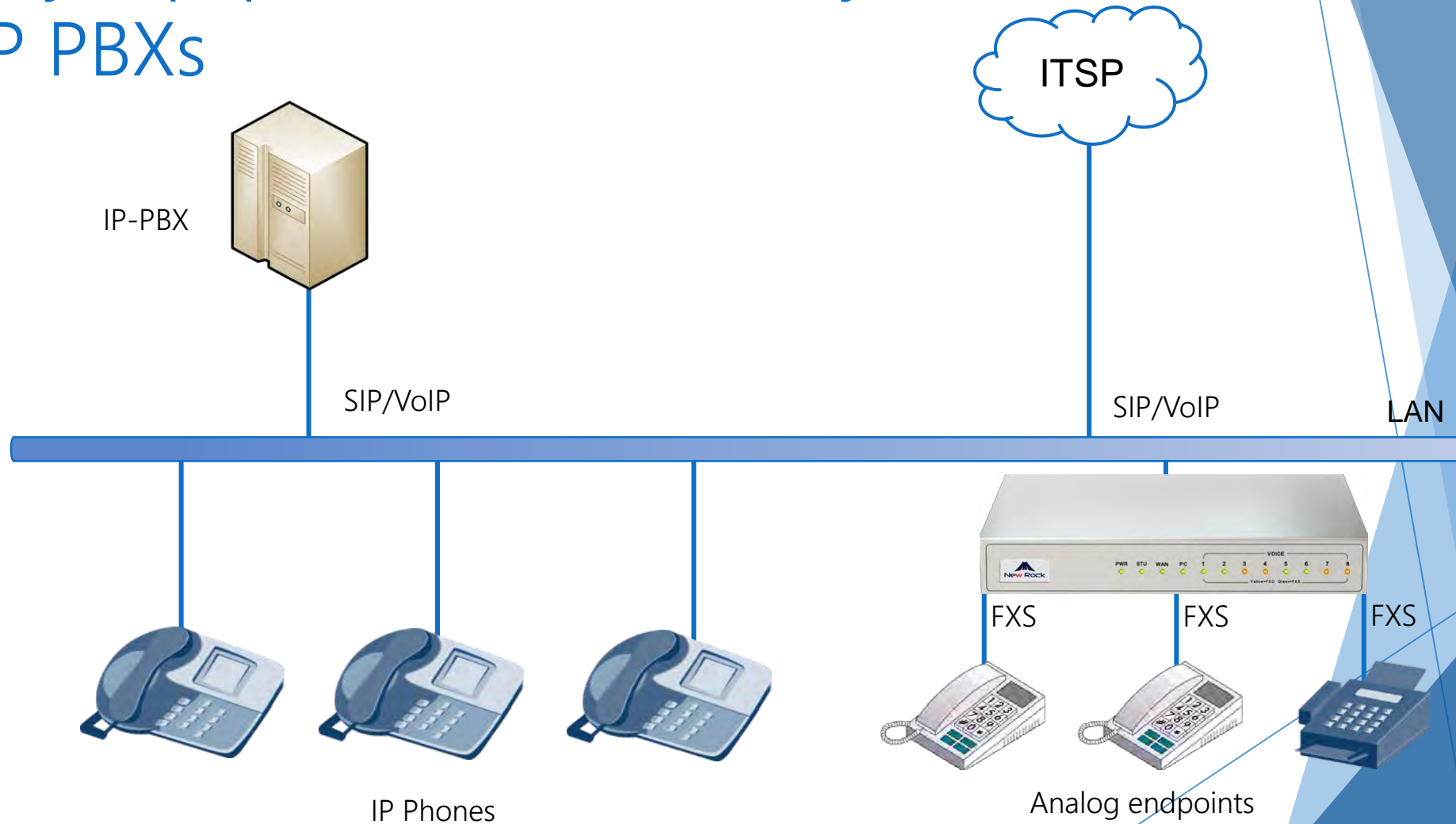


SIP/VoIP

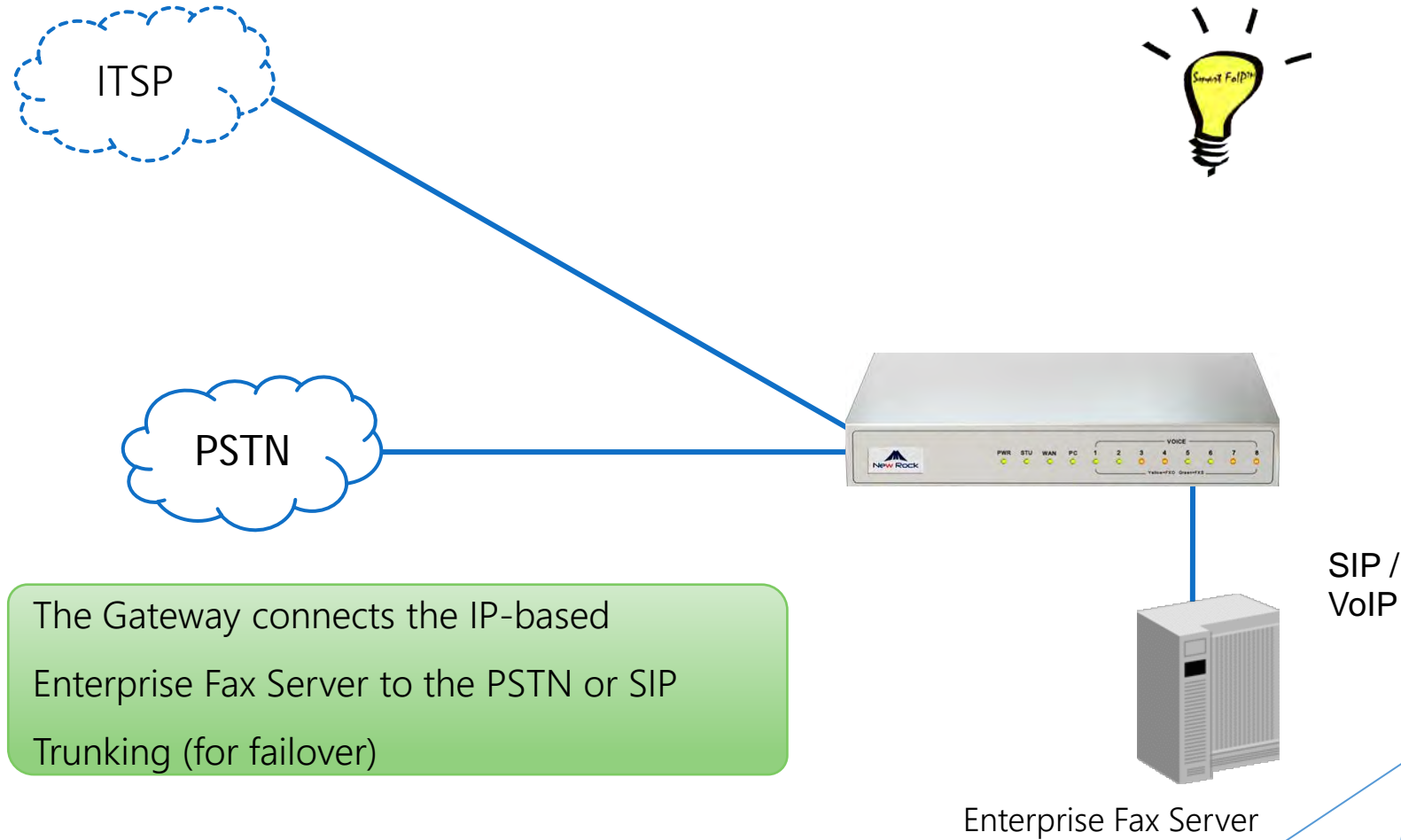
LAN



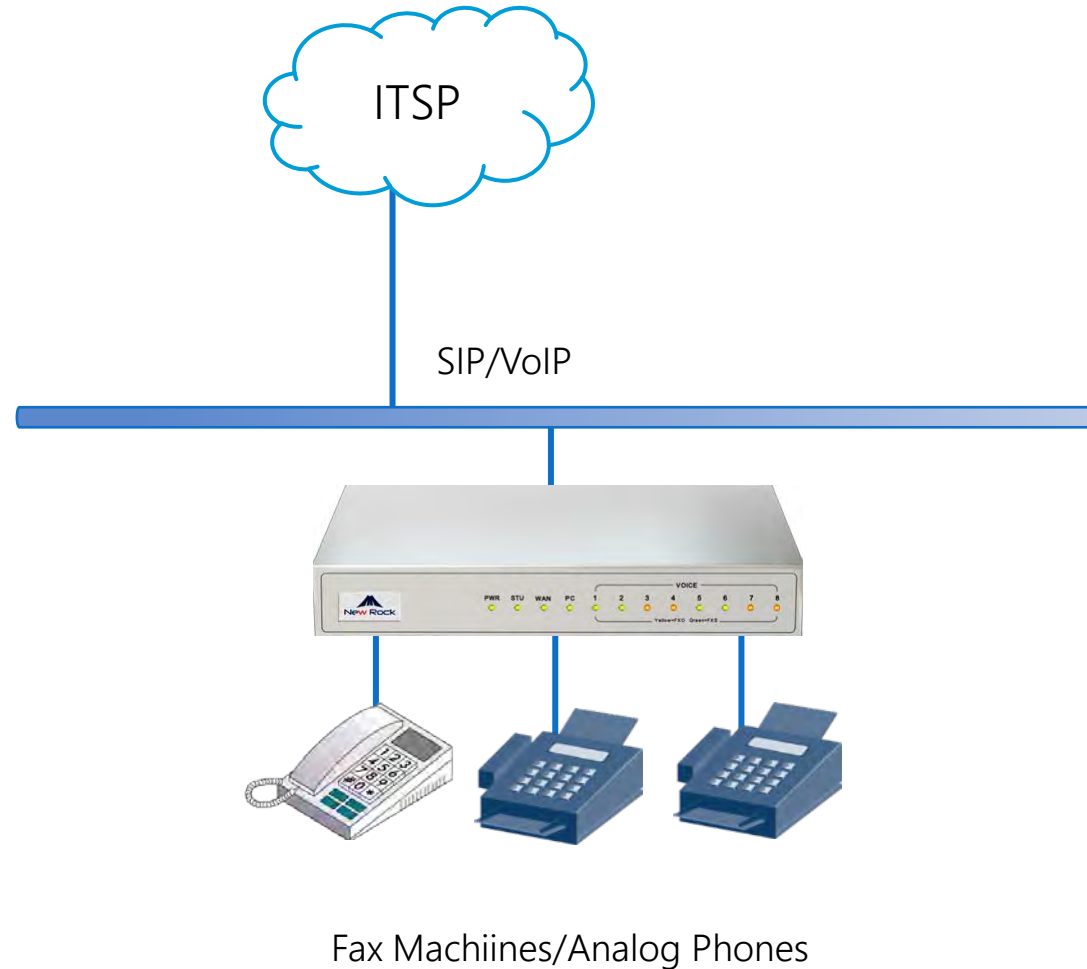
Legacy Equipment Connectivity for IP PBXs



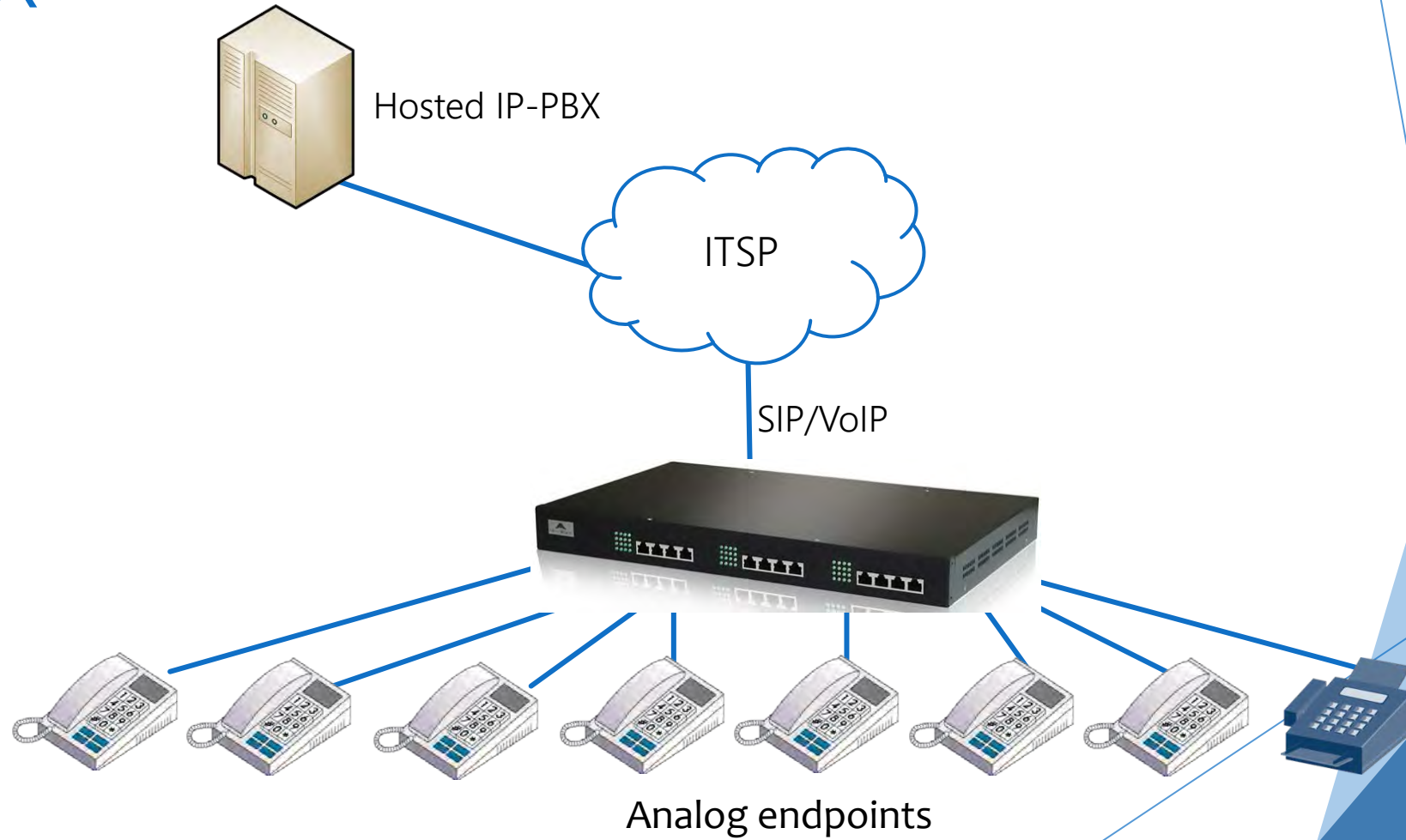
Connect FoIP Fax Servers to the PSTN



Connect Legacy Voice Terminals and Fax to Internet with High Reliability



Analog Connectivity for Cloud IP-PBX



Portfolio of Gateways

The background features abstract, overlapping geometric shapes in various shades of blue, ranging from light sky blue to deep navy blue. These shapes are primarily located on the right side of the frame, creating a modern, layered effect against the white background.

MX Series Gateways

MX Gateways



HX4/MX8
Desktop



MX60
Enterprise



MX120
High Density



MX100E
SIP-ISDN

	HX4/MX8 Desktop	MX60 Enterprise	MX120 High Density	MX100E SIP-ISDN
FXS/FXO	2~8	16~48	24~96	1~4T1/E1
Ethernet Ports	1	2	2	2
Line-Interface Modules	-	-	4	-

Key Features All MX Gateways

- ◆ DTMF detection
- ◆ SIP protocol
- ◆ Auto provisioning
- ◆ Echo cancellation
- ◆ T.38 fax relay
- ◆ 500 routing rules
- ◆ Number translation
- ◆ PSTN Failover
- ◆ TR069
- ◆ 2nd-stage dialing
- ◆ NAT traversal
- ◆ Auto dialing
- ◆ 500 routing rules
- ◆ Number translation
- ◆ Color ring back tone
- ◆ Intercom
- ◆ Voice Announcement
- ◆ Lifetime Software Upgrades

MX100G Trunking Gateway

- ◆ Up to 4 E1/T1 digital (E1/T1) trunks
- ◆ Connects E1/T1-based PBX and PSTN to IP telephony networks in a 1U chassis.
- ◆ Supports a variety of protocols and codecs, including SIP, ISDN PRI, G.711, G.729A, G.723, iLBC, GSM, and G.168, T.30, and T.38.
- ◆ G.168 echo cancellation
- ◆ DTMF relay (RFC2833) and T.38 fax relay
- ◆ Applications
 - ◆ PSTN-SIP digital trunking gateway
 - ◆ Interconnecting legacy PBX to IP-based voice network



MX100G Features

- ◆ Reliability
 - ◆ Redundant power modules
 - ◆ Hot swappable modules
- ◆ Protocols
 - ◆ Supports Session Initiated Protocol (SIP)
 - ◆ STUN Client for NAT/firewall traverse
 - ◆ ISDN PRI (USA, ITU, and China)
- ◆ Operations & Maintenance
 - ◆ RTP/RTCPTFTP for remote software upgrade \
 - ◆ HTTP/HTTPS for system and interface configuration and monitoring
 - ◆ Telnet/SSH for remote support
 - ◆ CDR/Radius



MX120 High-Capacity Analog Gateway

Suitable for carrier and medium-enterprise VoIP/FoIP deployment in a variety of FXS/FXO combinations of 24, 48, 72, or 96 concurrent calls (based on DSP cards)

- ◆ Applications
 - ◆ Access gateway in IMS-based network to deliver IP Centrex service
 - ◆ Media gateway in IP-PBX-based enterprise voice network
 - ◆ PSTN-SIP analog trunking gateway
 - ◆ Large call-center gateway
 - ◆ PSTN fail-over gateway



MX120 Features

- ◆ Web-based management GUI to configure parameters, upgrade firmware, import and export configuration data, and monitor status
- ◆ Remote management including Option 66 auto-provisioning, Telnet, TFTP, SNMPv2, TR069, TR104 and TR106, Radius accounting.
- ◆ Security Features
 - ◆ IP access list (IP table)
 - ◆ SIP/RTP/TELNET/HTTP/TFTP port assignment
- ◆ Voice QoS
- ◆ NAT traversal (STUN)
- ◆ Multiple Codecs
 - ◆ G.711ALaw, G.711ULaw, G.729A, G.723.1r63, G.723.1r53, GSM
 - ◆ T.38 fax relay, G.711 pass-through fax
 - ◆ DTMF relay (RFC 2833, SIP/INFO, inband)



MX60 Mid-size Analog Gateway

Suitable for medium-enterprise VoIP/FoIP deployment in a variety of FXS/FXO combinations

- ◆ Provides up to 48 ports of FXS and FXO and 2 Ethernet ports
- ◆ Applications
 - ◆ Access gateway in IMS-based network to deliver IP-centrex service
 - ◆ Media gateway in IP-PBX based enterprise voice network
 - ◆ PSTN-SIP analog trunking gateway
 - ◆ PSTN fail-over device



MX60 Features

- ◆ Web-based management GUI, allowing the user to configure parameters, upgrade firmware, import and export configuration data, and monitor status
- ◆ Supports remote management standards, such as Option 66 auto-provisioning, Telnet, TFTP, SNMPv2, TR069, TR104 and TR106, as well as Radius accounting
- ◆ Security Features
 - ◆ IP access list (IP table)
 - ◆ SIP/RTP/TELNET/HTTP/TFTP port assignment
- ◆ Voice QoS
- ◆ NAT traversal (STUN)
- ◆ Multiple Codecs
 - ◆ G.711ALaw, G.711ULaw, G.729A, G.723.1r63, G.723.1r53, GSM
 - ◆ T.38 fax relay, T.30 fax transparent
 - ◆ DTMF relay (RFC 2833, SIP/INFO, inband)



MX8A Analog Gateway



Ideal for SOHO, IP-PBX, and residential VoIP applications

- ◆ High voice quality and reliable fax in a compact package
- ◆ The MX8A offers multiple configurations - 4 FXS ports, 8 FXS ports, 4 FXO ports, 8 FXO ports, and 4FXS+FXO ports.
- ◆ Advanced VoIP/FoIP technologies including SIP, iLBC, and voice encryption, G.711 & T.38 fax relay with Smart FoIP (patent 9,094,419)
- ◆ User-friendly provisioning tools and management tools
 - ◆ RADIUS Billing Interface, TR069-based management (Include TR069, TR104, and TR106), Standard SNMP agent (MIB v2)
- ◆ Featuring busy tone auto detection, DTMF detection, fashion ringing tones, hook-flash relay, etc.
- ◆ Compatible with dozens of SIP platforms



MX8A Features



- ◆ Supports SIP/MGCP protocols
- ◆ Flexible configurations of FXS/FXO ports
- ◆ Outstanding security: Configurable SIP ports and IP address whitelist
- ◆ Supports IP/PSTN LCR selection
- ◆ Supports fax over IP using T.38 version 3 fax relay with V.34 and automatic switching between voice/fax
- ◆ Supports polarity-reversal/busy-tone detection
- ◆ Supports Auto Provisioning and TR069/SNMP
- ◆ Supports HA and PSTN failover
- ◆ Supports Class I lightning protection



Other Gateways

HX4E Analog ATA



Developed for small businesses, SOHO, and residential IP-telephony applications, the HX4E ATA is an integrated VoIP device that provides reliable and cost-efficient access methods flexible for deploying converged communication solutions for network operators and enterprises.

- ◆ Supports 2 or 4 FXS/FXO ports, 1 WAN port, and 1 PC port, which allows users to apply it as an N-to-1 system capable of providing versatile solutions by connecting analog phone, fax and POS machine, IP telephony and PSTN.
- ◆ Comprehensive Feature Set with Intelligent Engine
- ◆ Easy Operation and Management
- ◆ High Interoperability
- ◆ Investment Protection



HX4E Analog ATA

- ◆ Supports SIP/MGCP protocols
- ◆ Flexible configuration of FXS/FXO ports
- ◆ Outstanding security: Configurable SIP ports and IP address whitelist
- ◆ Advanced VoIP/FoIP technologies including SIP, iLBC, and voice encryption, G.711 & T.38 fax relay with Smart FoIP (patent 9,094,419)
- ◆ Supports polarity-reversal/busy-tone detection
- ◆ Supports Auto Provisioning and TR069/SNMP
- ◆ Supports HA and PSTN failover
- ◆ Supports Class I lightning protection



Enterprise IAD

Broadband access, WiFi, voice, IPTV, VPN, VLAN

EPON	1
Ethernet Ports	4
FXS	4-8
WiFi	IEEE802.11b/g/n
USB	2
VLAN	support
Firewall	support



ISG3004/3008

VPN	PPTP, L2TP, IPSec
Chassis Type	
Authentication	FCC, CE, CCC, ROHS

All Cables and Mounting Hardware Included

All gateways include:

- ◆ Rack mount kit
- ◆ Quick start guide
- ◆ License agreement
- ◆ Grounding Cable
- ◆ Power cord (country specific)
- ◆ Ethernet cable



Pricing and SKUs

The background features abstract, overlapping geometric shapes in various shades of blue, ranging from light to dark, creating a modern and professional aesthetic.

HX4 ATA Pricing

No.	HX4 analog lines Series SIP gateway (2 to 4 ports)		MSRP
	Model	Description	
1.1	HX411	1FXS+1FXO ports, 2 ETH	\$ 90.00
1.2	HX402	2FXS ports, 2 ETH	\$ 85.00
1.3	HX422	2FXS+2FXO ports, 2 ETH	\$ 130.00

No.	HX4E analog lines Series SIP gateway (2 to 4 ports)		MSRP
	Model	Description	
1E.1	HX412E	2FXS+1FXO ports, 2 ETH	\$ 105.00
1E.1	HX402E	2FXS ports, 2 ETH	\$ 85.00
1E.2	HX420E	2FXO ports, 2 ETH	\$ 100.00
1E.3	HX422E	2FXS+2FXO ports, 2 ETH	\$ 135.00
1E.4	HX404E	4FXS ports, 2 ETH	\$ 120.00
1E.5	HX440E	4FXO ports, 2 ETH	\$ 150.00

MX8 Pricing

No.	MX8 analog lines Series SIP gateway (4 to 8 ports)		MSRP
	Model	Description	
2.1	MX8-4S	4 FXS ports, 1 WAN port	\$ 190.00
2.2	MX8-4FXO	4 FXO ports, 1 WAN port	\$ 250.00
2.3	MX8-2S/2	2FXS+2FXO ports, 1 WAN port	\$ 230.00
2.4	MX8-8S	8 FXS ports, 1 WAN port	\$ 300.00
2.5	MX8-8FXO	8 FXO ports, 1 WAN port	\$ 400.00
2.6	MX8-6S/2	6FXS+2FXO ports, 1 WAN port	\$ 330.00
2.7	MX8-4S/4	4FXS+4FXO ports, 1 WAN port	\$ 350.00
2.8	Line Module	4FXS	\$ 120.00
2.9		4FXO	\$ 160.00
2.10		2FXS+2FXO	\$ 150.00

No.	MX8A analog lines Series SIP gateway (4 to 8 ports)		MSRP
	Model	Description	
2A.1	MX8A-8S	8 FXS ports, 2 ETH ports	\$ 270.00
2A.2	MX8A-6S/2	6FXS+2FXO ports, 2 ETH ports	\$ 285.00
2A.3	MX8A-4S/4	4FXS+4FXO ports, 2 ETH ports	\$ 300.00
2A.4	MX8A-8FXO	8FXO ports, 2 ETH ports	\$ 330.00
2A.5	MX8A-NA	no ports, MX8A host unit	\$ 110.00
2A.6	Line Module	4FXS	\$ 95.00
2A.7		4FXO	\$ 125.00
2A.8		2FXS+2FXO	\$ 115.00

MX60 Pricing

No.	MX60 Series SIP gateway (16 to 48 ports)		MSRP
	Model	Description	
3.1	MX60-16S	16 FXS ports, 16 concurrent calls, 2 WAN ports,1U,19"	\$ 540.00
3.2	MX60-24SB	24 FXS ports, 16 concurrent calls, 2 WAN ports,1U,19"	\$ 770.00
3.3	MX60-24S	24 FXS ports, 24 concurrent calls, 2 WAN ports,1U,19"	\$ 850.00
3.4	MX60-32SB	32 FXS ports,16 concurrent calls,2 WAN ports,1U,19"	\$ 940.00
3.5	MX60-32S	32 FXS ports,32 concurrent calls,2 WAN ports,1U,19"	\$ 1,100.00
3.6	MX60-48SB	48 FXS ports,24 concurrent calls,2 WAN ports,1U,19"	\$ 1,350.00
3.7	MX60-48S	48 FXS ports,48 concurrent calls,2 WAN ports,1U,19"	\$ 1,580.00
3.8	MX60-8S/8	8FXS+8FXO ports, 16 concurrent calls,2 WAN ports,1U,19"	\$ 670.00
3.9	MX60-24S/8B	24FXS+8FXO ports, 16 concurrent calls,2 WAN ports,1U,19"	\$ 1,000.00
3.10	MX60-24S/8	24FXS+8FXO ports, 24 concurrent calls,2 WAN ports,1U,19"	\$ 1,170.00
3.11	MX60-40S/8B	40FXS+8FXO ports, 24 concurrent calls,2 WAN ports,1U,19"	\$ 1,410.00
3.12	MX60-40S/8	40FXS+8FXO ports, 48 concurrent calls,2 WAN ports,1U,19"	\$ 1,630.00
3.13	MX60-16S/16	16FXS+16FXO ports, 32 concurrent calls,2 WAN ports,1U,19"	\$ 1,240.00
3.14	MX60-32S/16B	32FXS+16FXO ports, 24 concurrent calls,2 WAN ports,1U,19"	\$ 1,490.00
3.15	MX60-32S/16	32FXS+16FXO ports, 48 concurrent calls,2 WAN ports,1U,19"	\$ 1,720.00
3.16	MX60-24S/24B	24FXS+24FXO ports, 24 concurrent calls,2 WAN ports,1U,19"	\$ 1,560.00
3.17	MX60-24S/24	24FXS+24FXO ports, 48 concurrent calls,2 WAN ports,1U,19"	\$ 1,790.00
3.18	MX60-16FXO	16FXO ports, 16 concurrent calls,2 WAN ports,1U,19"	\$ 870.00
3.20	MX60-32FXO	32FXO ports, 32 concurrent calls,2 WAN ports,1U,19"	\$ 1,390.00
3.21	MX60-48FXOB	32FXO ports, 24 concurrent calls,2 WAN ports,1U,19"	\$ 1,610.00
3.22	MX60-48FXO	48FXO ports, 48 concurrent calls,2 WAN ports,1U,19"	\$ 1,860.00

MX 120 Pricing

No.	MX120 Series SIP gateway (48 to 96 ports)		MSRP
	Model	Description	
4.1	Chassis	MX120-NA-1U-C	\$ 880.00
4.2		MX120-NA-1U-D	\$ 1,060.00
4.3		MX120-NA-2U-C	\$ 950.00
4.4		MX120-NA-2U-D	\$ 1,120.00
4.5		MX120-NA-2U-E	\$ 1,310.00
4.6		MX120-NA-2U-F	\$ 1,470.00
4.7	Line Interface Card	MX120-IF-24S	\$ 350.00
4.8		MX120-IF-16S	\$ 250.00
4.9		MX120-IF-8S/8	\$ 310.00
4.10		MX120-IF-16S/8	\$ 400.00
4.11		MX120-IF-12S/12	\$ 430.00
4.12		MX120-IF-24FXO	\$ 500.00
4.13		MX120-IF-16FXO	\$ 350.00
4.14	PMC Module	MX120-PMC-3DSP	\$ 220.00
4.15		MX120-PMC-6DSP	\$ 400.00
4.16		MX120-PMC-9DSP	\$ 600.00

MX100 Pricing

No.	MX100-TG E1/T1 Series SIP gateway (ISDN PRI)		MSRP*
	Model	Description	
5.1	MX100E-1E1	1 port E1 or T1,2 WAN ports,1U,19"	\$ 1,700.00
5.2	MX100E-1E1-2P	1 port E1 or T1,2 WAN ports,1U,19",w/dual power suppliers	\$ 2,000.00
5.3	MX100E-2E1	2 ports E1 or T1,2 WAN ports,1U,19"	\$ 2,700.00
5.4	MX100E-2E1-2P	2 ports E1 or T1,2 WAN ports,1U,19",w/dual power suppliers	\$ 3,000.00
5.5	MX100E-4E1	4 ports E1 or T1,2 WAN ports,1U,19"	\$ 5,200.00
5.6	MX100E-4E1-2P	4 ports E1 or T1,2 WAN ports,1U,19",w/dual power suppliers	\$ 5,500.00

The Competition

The background features a complex, abstract design of overlapping, semi-transparent blue polygons. The colors range from light sky blue to deep, dark navy blue. The shapes are primarily triangles and quadrilaterals, creating a dynamic, layered effect that is most prominent on the right side of the slide.

The Competition

- ◆ Gateway business is mature but is experiencing strong growth in the Americas
- ◆ Several players, similar functionality
 - ◆ Key competitors are Grandstream, Audiocodes, and Patton
- ◆ Compete favourably on price, reliability, features, and support

The logo for Patton, featuring the word "PATTON" in a bold, black, sans-serif font with a registered trademark symbol.The Cisco logo, consisting of a stylized signal tower icon above the word "CISCO" in a bold, red, sans-serif font.The logo for Network Equipment Technologies, featuring the word "net" in a bold, black, sans-serif font with a yellow and black swoosh above it, and "Network Equipment Technologies" in a smaller font below.The AudioCodes logo, featuring a stylized blue icon of a person's head and shoulders next to the word "AudioCodes" in a blue, sans-serif font.The Grandstream logo, featuring a stylized blue "G" icon above the word "Grandstream" in a blue, sans-serif font, with the tagline "Innovative IP Voice & Video" below.The Media5 Corporation logo, featuring a red swoosh above the word "media5" in a blue, sans-serif font, with "corporation" in a smaller font below.The Yeastar logo, featuring a red icon of a flower or star next to the word "Yeastar" in a green, sans-serif font.The Adtran logo, featuring the word "ADTRAN" in a bold, blue, sans-serif font.The Epygi logo, featuring a red icon of a stylized "e" next to the word "epygi" in a black, sans-serif font.

Grandstream

Model			
			✓
			✗

Model			
	\$	✓	✓
	\$	✗	✗

- ◆ Customer support a challenge for Grandstream
- ◆ Higher reliability for New Rock
- ◆ Competitive price for New Rock

AudioCodes

Model	1 x E1T1 30 Calls	2 x E1T1 60 Calls	E1T1 Relay Ports
MX120	\$1395	\$2195	✓
Mediant 600	\$3278	\$4485	✗
Mediant 800	\$1546	NA	✗
Mediant 1000	\$3857	\$5277	✗

Model	4 FXO	2 x LAN	IP Phone Resilience
MX60	\$	✓	✓
MP114	\$	✗	✗

- ◆ A la carte pricing on larger models
- ◆ Customer support a challenge
- ◆ Wide, very flexible range
- ◆ Clear price advantage for New Rock

Patton

Model	1 x E1T1 30 Calls	2 x E1T1 60 Calls	E1T1 Relay Ports
MX60	\$	\$	✓
4940	\$2700	\$4890	✗
4950 (+ rtr)	\$3350	\$5380	✗
4960 (+ rtr, SBC)	\$3428	\$6189	✗

Model	4 FXO	2 x LAN	IP Phone Resilience
	\$425	✓	✓
SN4110	\$424	✗	✗
SN4520	\$499	✗	✗

- ◆ Limited management platform
- ◆ Fixed NT/TE config on BRI
- ◆ Single LAN on some models
- ◆ Clear price advantage for New Rock

Support & Services

The background features abstract, overlapping geometric shapes in various shades of blue, ranging from light sky blue to deep navy blue. The shapes are primarily triangles and polygons, creating a dynamic, layered effect. The text 'Support & Services' is centered in a clean, blue, sans-serif font.

Best-in-Class Support

- ◆ New Rock Cloud
- ◆ Fully-trained North America support organization
- ◆ Priority support options
- ◆ Phone/e-mail support
- ◆ Documentation includes:
 - ◆ Admin guides/How-to-guides
 - ◆ Step-by-step configuration
 - ◆ Technical documents/Release notes/FAQs
 - ◆ Software Downloads
- ◆ http://www.newrocktech.com.cn/Services_E.asp



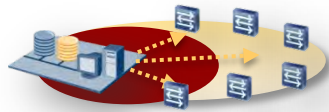
New Rock Cloud

- ◆ Provide the connectivity for devices behind NAT and firewall, which enables applications such as SIP extension (client), registering from internet to enterprise SIP server deployed in the LAN.
- ◆ Providing the centralized device-management framework for channels, enterprise customers, and ITSPs, to allow remote monitoring, configuration, troubleshooting and firmware upgrades
- ◆ Provides intelligent assistant for network adaptation
- ◆ Provides secure and reliable mechanism for third-party applications to work with New Rock products through open APIs to solve SMB long-tail demand

New Rock Cloud



NAT Traversal



Remote Management



Online Troubleshooting



Device information collection



Version detection and
automated upgrade

"Synergies" Partner Program



The New Rock Partner Program is designed to empower our partners to successfully deploy New Rock products while offering the highest financial returns in the industry. Here are the key elements of the program.

- ◆ LEADS!!
- ◆ Not-for-Resale products, for demonstrations and evaluation
- ◆ Efficient partner on-boarding process
- ◆ Product training
- ◆ Sales-support documentation, collateral, and presentations
- ◆ Access to upcoming webcasts & podcasts to learn the "tricks of the trade"
- ◆ Competitive discounts and commission rates
- ◆ Innovative loyalty program
- ◆ Competitive analysis
- ◆ Leads based on participation level in the program

Closing

Why New Rock VoIP Gateways?

The MX Series of VoIP Gateways has distinctive advantages over the competition in terms of

- ◆ Performance,
- ◆ System reliability,
- ◆ Compatibility, and
- ◆ Cost.

The New Rock Advantage

- ◆ Long history in VoIP
- ◆ Ease of installation and operation
- ◆ Rich feature set
- ◆ Most reliable fax solution in the industry (Smart FoIP®)
- ◆ Available professional services for installation/configuration
- ◆ New Rock Cloud

Providing the Highest-Quality Products at Market-Leading Prices

Contact Us



- ◆ New Rock Technologies Americas
 - ◆ 1225 Northmeadow Pkwy
 - ◆ Suite 114
 - ◆ Roswell, GA 30076
 - ◆ Website: <http://www.newrocktechusa.com/>
- ◆ Telephone: 770-449-7704
- ◆ Email: sales@newrocktechusa.com

Thank You!