

SME Solutions for the ITSP, Reseller, and Agent

*Let our products and services give your top
and bottom lines a boost*



Everything Needed for the SME's CPE

- **YoubiquITY**...it's as if you were there (and it's free)!
- Gateways to 120 ports
- Wireless PBXs to 40 stations
- IP PBXs to 500 stations
- Four IP phones



Everything Needed for the SME's CPE (cont.)

- SBCs to 500 concurrent calls
- GPON IADs
- Patented Smart ATA®
- Included software: contact center, CDR, call recording, softphone, phone manager
- Open RESTful API



About NetGen Communications, Inc.

- Bringing China's leading SME telecom product line to North America
- Develop and resell telecom products for the SME and SME channel
- Making standards-based FoIP work
- Smart ATA®: NetGen's first product, launched in 2Q2012
- Thousands shipped to over 100 ITSPs
- Now expanding to support entire New Rock product line



About New Rock Technologies, Inc.

- Founded in 2004, a Delaware corporation, has its primary development and manufacturing in Shanghai
- Business: design, produce, and market telecom products for the SME
- Solutions for service providers and the telecom channel: system integrators, resellers, independent software vendors, as well as OEM partners
- New Rock produced 20% of the VoIP lines installed in China in 2015



New Rock Global Operations



NETGEN
Communications

New Rock
TECHNOLOGIES

VoIP Gateways



MX100G-TG



Smart ATA



MX120G



MX8A



MX60E

NETGEN
Communications

NEW ROCK
TECHNOLOGIES

Why the MX VoIP Gateways?

The MX Series of VoIP Gateways has distinctive advantages over the competition in terms of

- FXS, FXO configurability
- Performance
- Reliability
- Compatibility
- Maintainability ([YoubiquiTy](#)), and
- Price and TCO



Smart ATA...the only standards-based ATA with PSTN success rates and V.34 fax



We Make FoIP Work!

NETGEN
Communications

NEW ROCK
TECHNOLOGIES

Three BIG Problems Solved by Smart FoIP®

1. Slow SIP responses leads to T.38 re-Invite failures
2. G.711 pass-thru PCM clock sync failures
3. V.34-SIP integration is complex

MX 8A VoIP Gateway



NETGEN
Communications

NewRock
TECHNOLOGIES

MX60E – Performance for TLS/SRTP



**Full-capacity (non-blocking) Concurrent Calls with
TLS/SRTP**

Item	Before	After
CPU	400 MHz	1 GHz, TI A8
RAM	64 MB	128 MB, DDR3
Flash	16 MB	32 MB

MX100G-TG (Q2) – Dual AC/DC Power Supplies



- **Standard** — Single AC
- **Optional** — Single DC, dual AC and dual DC

NETGEN
Communications

New Rock
TECHNOLOGIES

MX120G – Meet High End Requirements



Item	Before	After
CPU	266.666 MHz, MPC8247	1 GHz, TI A8
RAM	64 MB/128 MB	256 MB, DDR3
Flash	8 MB/16 MB	32 MB
Ethernet port	10/100 Mbps	10/100/1,000 Mbps
Power supply	Single AC, single DC	Dual AC, dual DC Single AC, single DC
Hot-swappable interface card	Not supported	Supported
Non-blocking calls		96

NETGEN
Communications

NEW ROCK
TECHNOLOGIES

1+1 Redundancy of MX120G/OM200G



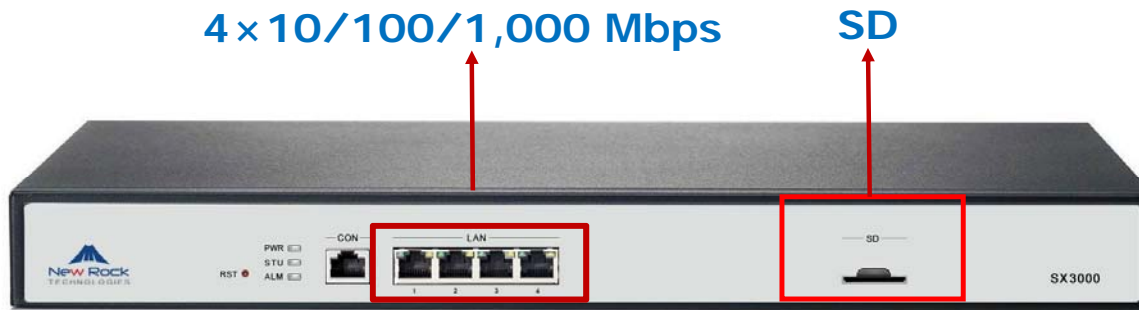
Dual Gigabit-Ethernet ports

- Redundant and Switching Mode
- Business Continuity

Dual Power Supplies

- **Standard** — Single AC
- **Optional** — Single DC, dual AC and dual DC

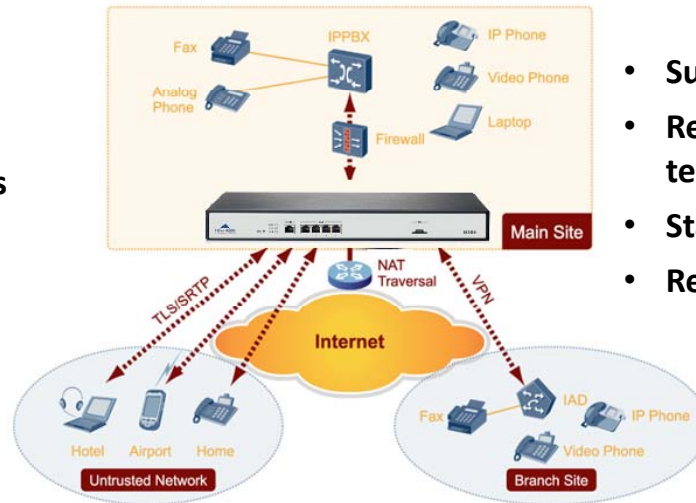
SX3000 Enterprise SBC



H×W×D	44×440×300 mm (1.73×17.32×11.81 inch)
Concurrency	600 (without TLS/SRTP) 300 (with TLS/SRTP)
User Registration	3,000 SIP terminals
Delay	<30 microseconds

SX3000 Enterprise SBC

- NAT/firewall traversal
- Support for TLS/SRTP/HTTPS
- Internetworking with 4 networks
- Access control through IP table
- Providing RTP proxy function

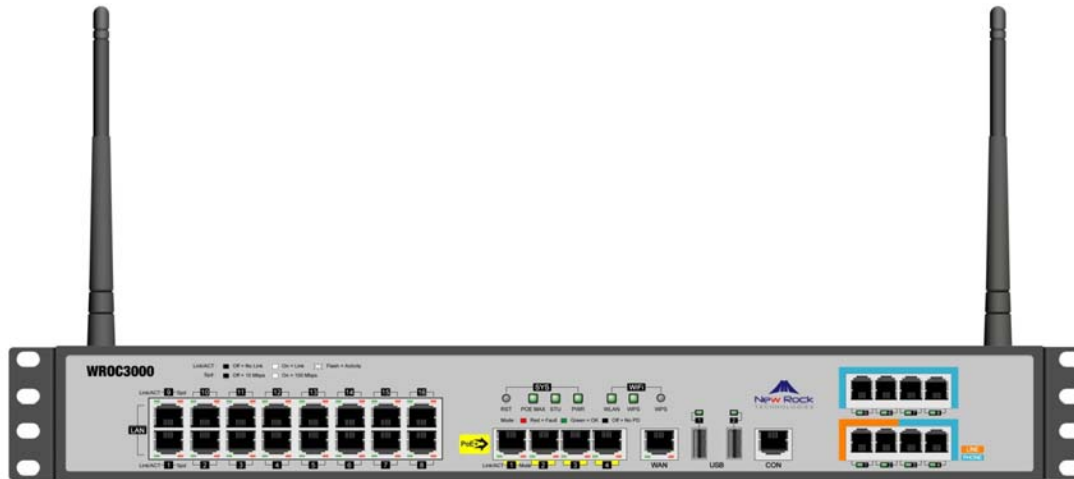


- Surveillance and network failover
- Registration and authentication of SIP terminal
- Status and statistics reports with TR-069
- Remote support with [YoubiquiTy](#)

OM IP PBX Series

Product models		
OM20 SOHO	FXS and FXO ports: 4 SIP clients: 20 SIP trunks: 24	
OM50S Small office	FXS and FXO ports: 12 SIP clients: 50 SIP trunks: 62	
OM80E Mid-size office	FXS and FXO ports: 16-48 SIP clients: 60 SIP trunks: 64	
OM200G High density	FXS and FXO ports: 24-96 SIP clients: 120 SIP trunks: 128	
OM500 Large and mid-size office	TI/E1: 0~2 SIP clients: 512 SIP trunks: 512	

WROC 3000 Wireless/IP PBX



NETGEN
Communications

New Rock
TECHNOLOGIES

WROC 2000 Wireless/IP PBX



NETGEN
Communications

NEW ROCK
TECHNOLOGIES

OM50S IP PBX – Dual CPUs to Host Applications



VoIP Subsystem

CPU	700MHz
RAM	128MB DDR3
FLASH	16MB

Third-party Application Subsystem

CPU	880MHz, dual core
RAM	512MB DDR3
FLASH	32MB
Storage	16GB built-in + TF card

NETGEN
Communications

New Rock
TECHNOLOGIES

OM50S (Q3) – Performance and Storage Enhancements



USB 3.0 port



**16GB Built-in Storage
& TF Card**



Gigabit-Ethernet ports



**Full-capacity
Concurrent Calls**

NETGEN
Communications

NEW ROCK
TECHNOLOGIES

OM80E (Q3) – Performance and Built-in Storage



Item	Before	After
CPU	400 MHz	1 GHz, TI A8
RAM	64 MB	128 MB, DDR3
Flash	16 MB	32 MB
Built-in storage	Not supported	Supported (16 GB)
RTC	Not supported	Supported
Voice Stations		60

OM200G – Performance and Built-in Storage (120 voice stations)





Item	Before	After
CPU	266.666 MHz, MPC8247	1 GHz, TI A8
RAM	64 MB/128 MB	256 MB, DDR3
Flash	8 MB/16 MB	32 MB
Ethernet port	10/100 Mbps	10/100/1,000 Mbps
Power supply	Single AC, single DC	Dual AC, dual DC Single AC, single DC (Optional)
Hot-swappable interface card	Not supported	Supported
Built-in storage	Not supported	Supported (16 GB)
RTC	Not supported	Supported

NETGEN
Communications

New Rock
TECHNOLOGIES

PT2400/PT4800 RJ45-RJ11 Patch Panel Surge Protector for Telecom

Item	PT2400	PT4800
Illustration		
Number of RJ45 ports	6	12
Number of RJ11 ports	24	48
Severity level for lightening strike test	3.5kV @ 10/700uS	6.0kV @ 10/700uS
Surge protection	Common mode (TIP/RING, each line)	
Chassis material	Galvanized steel	
Installation	Flush mount	
Dimensions (H × W × D)	1.49 × 18.90 × 1.81 in. (43 × 480 × 46mm)	1.49 × 18.90 × 4.53 in. (43 × 480 × 115 mm)

IP Phones



NRP1000/P

- ✓ 2 SIP lines



NRP1004/P

- ✓ 2 SIP lines
- ✓ 4 DSS keys



NRP1012/P

- ✓ 6 SIP lines
- ✓ 12 DSS keys

Included Software



WeWei Softphone

Android & iOS

- ✓ SIP-based softphone for B2B and B2C
- ✓ PIN registration
- ✓ 6-party conference
- ✓ Auto DISA
- ✓ Auto adaption to any network
- ✓ Low bandwidth needed
- ✓ G.729 available



NeeHau SoftConsole

Windows-based

- ✓ SME call centers
- ✓ Click-to-dial
- ✓ Pop-up Incoming notification
- ✓ Call recordings
- ✓ Call histories
- ✓ Contact list

NETGEN
Communications

New Rock
TECHNOLOGIES



*Youbiqui**TY***

You Have the Cloud...You're In Control

NETGEN
Communications


NEW ROCK
TECHNOLOGIES

Remote Management Options

- Manual with the GUI
- Build your own infrastructure
- Use a third-party (e.g. netXUSA, Vital Communications)
- Vendor supplied (e.g. YoubiquITY with EMS)



YoubiquiTy... “it’s as if you were there!”

- Provision
- Configure
- Versioning with automatic upgrades
- Monitor, alarm, and display
- Troubleshoot
- NAT traversal...solved
- Use for your RESTful applications
- Use for your OM50S add-in applications



YoubiquiTy for MX, OM, & WROC



NAT
Traversal



Online
Troubleshooting



Remote
Management



With EMS



information
collection

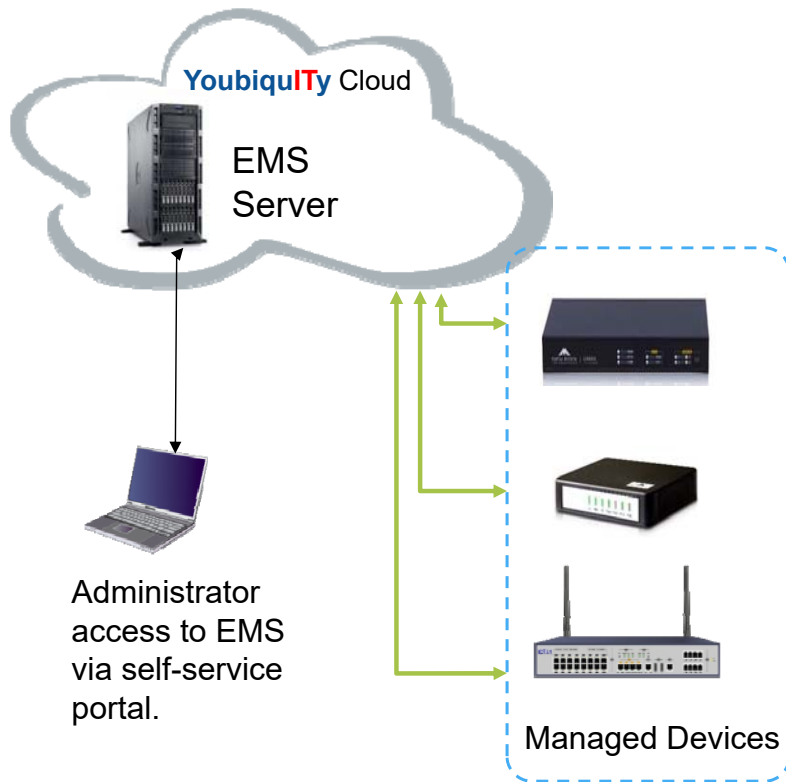


Version and
automated upgrade

NETGEN
Communications

NEW ROCK
TECHNOLOGIES

YoubiquiTy Cloud Topology



- **YoubiquiTy** supports NAT traversal and provides comprehensive EMS
- **YoubiquiTy** provides peer-to-peer communications for multi-site installations
- A plug-in agent in managed devices is used to bind devices to **YoubiquiTy**
- EMS will scan and add devices in batch mode via **YoubiquiTy** user ID and authorization token
- Administrators can access and manage all the devices in their deployment

NETGEN
Communications

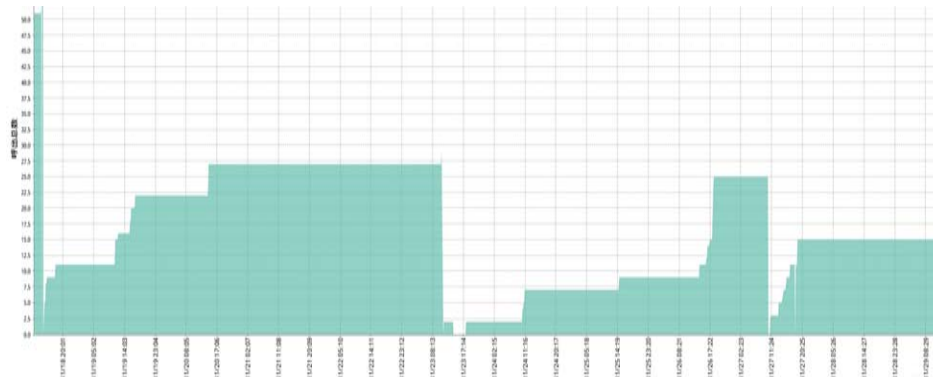
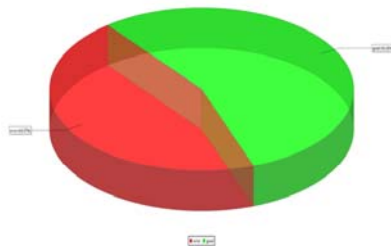
NEW ROCK
TECHNOLOGIES

YoubiquITy Data Collection and Analysis



Statistical Analysis

- Multi-dimensional and multiform statistics report
- Data, table and figure combination
- Query report according to time, devices or other requirements
- Automatically generate and download report



NET GEN
Communications

NEW ROCK
TECHNOLOGIES

YoubiquiTy Summary

- Connects devices behind NAT and firewall
- Centralizes device-management for channel partners, enterprise customers, and ITSPs, to allow remote monitoring, configuration, troubleshooting and firmware upgrades
- Provides intelligent assistant for network adaptation
- Secures a reliable mechanism for third-party applications to work with New Rock products through open APIs



Become a Partner!
We thank you!

